

Powermax30 XP

Recommended cut capacity of 10 mm (3/8")

Severance capacity of 16 mm (5/8")

Professional grade



Part of the Powermax® family, the Powermax30 XP is a highly portable two-in-one plasma cutter providing high-power capability for thick metal cutting and detailed, thin metal cutting.

Key business benefits

Simplify operations and boost productivity

Easy-to-use interface and drag-cutting consumables reduce training time and improve cut quality

Minimize operating costs

Up to 10x longer consumable life compared to competitors decreases operating costs

High uptime and reliability

Robust design and long-lasting consumables ensure system durability and long life

Powermax30 XP cut and gouge capacities

| Capacity | Thickness | Cut speed |
|----------------|--------------|---------------------|
| Cutting | | |
| Recommended | 10 mm (3/8") | 500 mm/min (20 ipm) |
| | 12 mm (1/2") | 250 mm/min (10 ipm) |
| Severance | 16 mm (5/8") | 125 mm/min (5 ipm) |

| | |
|----------------------|---------------------------------|
| Torch output* | 3.75 kW |
| | 30 A x 125 V ÷ 1000 W = 3.75 kW |

*Higher output voltage at the torch plus efficiently designed consumables result in a faster, cleaner cut.

The Powermax30 XP. Portable and versatile.

Highly portable, the Powermax30 XP handles a wide range of jobs and provides high-power capability for thick metal cutting and FineCut® consumables for detailed, thin metal cutting. With a dual-voltage design, it can run on a 240 V circuit and, depending on the region, a 120 V circuit.

Unique “two-in-one” design provides high-power capability for thick metal cutting and FineCut consumables for detailed, thin metal cutting.

THE **BEST**
INVESTMENT
IS IN YOUR
POWER



Specifications

CE – for use in Europe, Australia & New Zealand - RCM, Serbia, UK – UKCA, Ukraine, and other countries where accepted.

CCC – for use in China.

GSA – for use in the Americas and Asia, except China.

| | | | |
|----|-----|-----|----------------|
| CE | CCC | GSA | Specifications |
|----|-----|-----|----------------|

| | |
|---|---|
| Input voltages (± 10%) | |
| ↳ | 120–240 V, 1-PH, 50/60 Hz |
| Input current @ 3.8 kW | |
| ↳ | 120–240 V, 1-PH, 25.5–18.8 A |
| Output current | 15–30 A |
| Rated output voltage | 125 VDC |
| Duty cycle @ 40° C (104° F) | |
| ↳ | 35%, 240 V |
| ↳ | 20%, 120 V |
| Open circuit voltage (OCV) | |
| ↳ | 256 VDC |
| Dimensions with handles | 356 mm (14.0") D; 140 mm (5.5") W; 292 mm (11.5") H |
| Weight w/4.5 m (15') torch | 9.5 kg (21.4 lbs) |
| Gas supply | Clean, dry, oil-free air or nitrogen |
| Recommended gas inlet flow rate/pressure | 113.3 l/min (4 scfm) @ 80 psi (5.5 bar) |
| ↳ | 9.5 kg (21.4 lbs) |
| Input power cable length | 3 m (10') |
| Power supply type | Inverter – IGBT |
| Engine drive requirement | 5.5 kW for full 30 A output |
| Warranty | Power supply: 3-year, Torch: 1-year |

Highlighted product features:

Easy to use

- Simplified operations get you cutting quickly and easily
- Small and lightweight, the Powermax30 XP delivers whenever and wherever you need it
- Quickly cut metal grate or rusted metal without retriggering with the continuous pilot arc feature

Versatile

- Plug into any 120 or 240 V circuit (convenient Auto-Voltage™ technology and plug adapters included)
- Two-in-one design for maximum versatility with high power for thicker metals and FineCut consumables for high-quality cuts on thinner metals

Industry-leading reliability

- Powermax plasma cutters are known to last decades in the field, minimizing maintenance and downtime
- Torches are engineered for rugged industrial environments
- Each Powermax component is tested to perform reliably in demanding conditions

Our customers' preferred cutting tool for industries including:

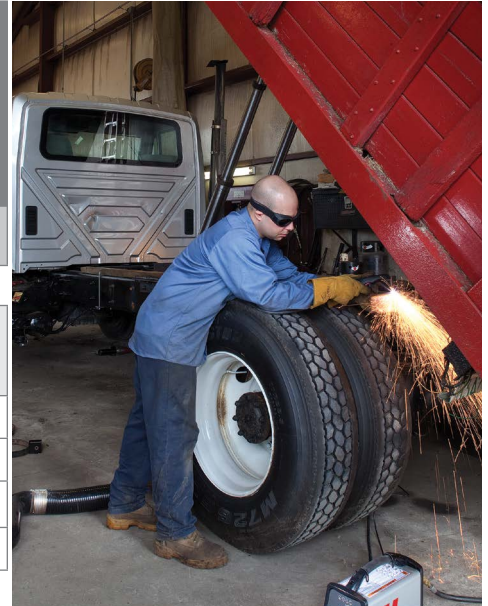
- Automotive repair/restoration
- Metal art and signage
- Property/plant maintenance
- HVAC/mechanical contracting
- Educational/trade schools
- Agricultural/equipment maintenance

Ordering information

Below are the standard system configurations, which include a power supply, torch, and work cable.

| | | | |
|---|-----|-----|--|
| <p>CE – for use in Europe, Australia & New Zealand - RCM, Serbia, UK – UKCA, Ukraine, and other countries where accepted.</p> <p>CCC – for use in China.</p> <p>CSA – for use in the Americas and Asia, except China.</p> | | | Duramax LT torch hand torch with 4.5 m (15') lead and work clamp with 4.5 m (15') lead |
| CE | CCC | CSA | |
| Torch lead length | | | 4.5 m (15') |

| | | |
|---|--|----------|
| Powermax30 XP® power supply with 4.5 m (15') Duramax LT torch | | Handheld |
| ↳ | 120–240 V standard and carry case, gloves, and shade 5 glasses | 088079 |
| ↳ | 120–240 V standard | 088081 |
| ↳ | 120–240 V standard | 088084 |
| ↳ | 120–240 V standard | 088082 |



Torch consumable parts

| Consumable type | Torch type | Amperage | Shield/Deflector | Retaining cap | Nozzle | Electrode | Swirl ring |
|-----------------|------------|----------|------------------|---------------|--------------------------------------|-----------|------------|
| Standard | Hand | 30 | 420116 | 420114 | 420118 | 420120 | 420211 |
| FineCut | Hand | 30 | 420115 | 420114 | 420117 | 420120 | 420211 |
| HyAccess™ | Hand | 30 | | 420148 | 420144 (cutting) 420147 (gouging) | 420137 | 220670 |

Electrodes and nozzles are sold in packs of five, as well as combination packs of 2 electrodes and 2 nozzles.

| Description | Part number |
|---------------------|-------------|
| Standard combo pack | 428243 |
| FineCut combo pack | 428244 |

System includes

- Power supply, 4.5 m (15') Duramax™ LT hand torch with standard consumables, 4.5 m (15') work clamp
- 240 V/20 A plug with adapters for 120 V/15 A and 240 V/20 A circuits
- Operator and safety manuals
- Consumable kit with 1 standard nozzle, 1 electrode, 1 FineCut® nozzle and 1 FineCut deflector
- Plastic carry case
- Carrying strap
- Leather gloves
- Shade 5 glasses



Consumable kits



Essential consumable kit

Essential kits provide a convenient assortment of standard consumables for your Powermax® system. The storage case protects and organizes your consumables and provides part number information for ease of reordering your consumables. Made in USA.

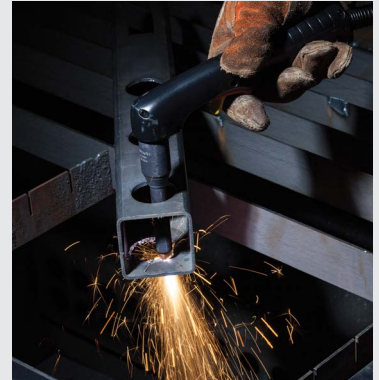
851479 Powermax30 XP kit



HyAccess consumable kit

Uniquely designed for accessibility, the patented HyAccess™ extended consumables provide the extra reach needed when cutting or gouging in hard to reach or confined spaces.

428337 HyAccess consumable kit



Recommended Hypertherm genuine accessories

| Part number | Description |
|---|---|
| Face Shield: Clear face shield with flip-up shade for cutting and grinding. Safety shield included. ANSI Z87.1, CSA Z94.3, CE. | |
| 127239 | Face shield shade 6 |
| 127103 | Face shield shade 8 |
| Circle cutting guides: Quick and easy set up for accurate circles up to 70 cm (28") diameter. For optional use as a stand-off guide for straight and bevel cuts. Made in USA. | |
| 127102 | Basic kit - 38 cm (15") arm, wheels and pivot pin |
| 027668 | Deluxe kit - 28 cm (11") arm, wheels, pivot pin, anchor base and plastic case |
| Flip-up eyeshades: Shade 5 (for <40 A) flip-up shade, anti-scratch lens and adjustable frame. ANSI Z87.1, CSA Z94.3, CE. | |
| 017033 | Flip-up eyeshades |
| System dust covers: Made from a flame-retardant vinyl, a dust cover will protect your Powermax system for years. Made in USA. | |
| 127144 | Cover, Powermax30 XP |

Accessories



Face shield



Flip-up eyeshades



System dust covers



Circle cutting guides

Learn more at www.hypertherm.com/powermax30XP

Unless otherwise noted in the collateral, all trademarks are property of Hypertherm, Inc. and may be registered in the United States and/or other countries.

Please visit www.hypertherm.com/patents for more details about Hypertherm Associates patent numbers and types.

© 4/2024 Hypertherm, Inc. Revision 5

860450EN-EU

As 100% Associate owners, we are all focused on delivering a superior customer experience. www.hyperthermassociates.com/ownership

Environmental stewardship is one of Hypertherm Associates' core values. www.hyperthermassociates.com/environment

100% Associate-owned

