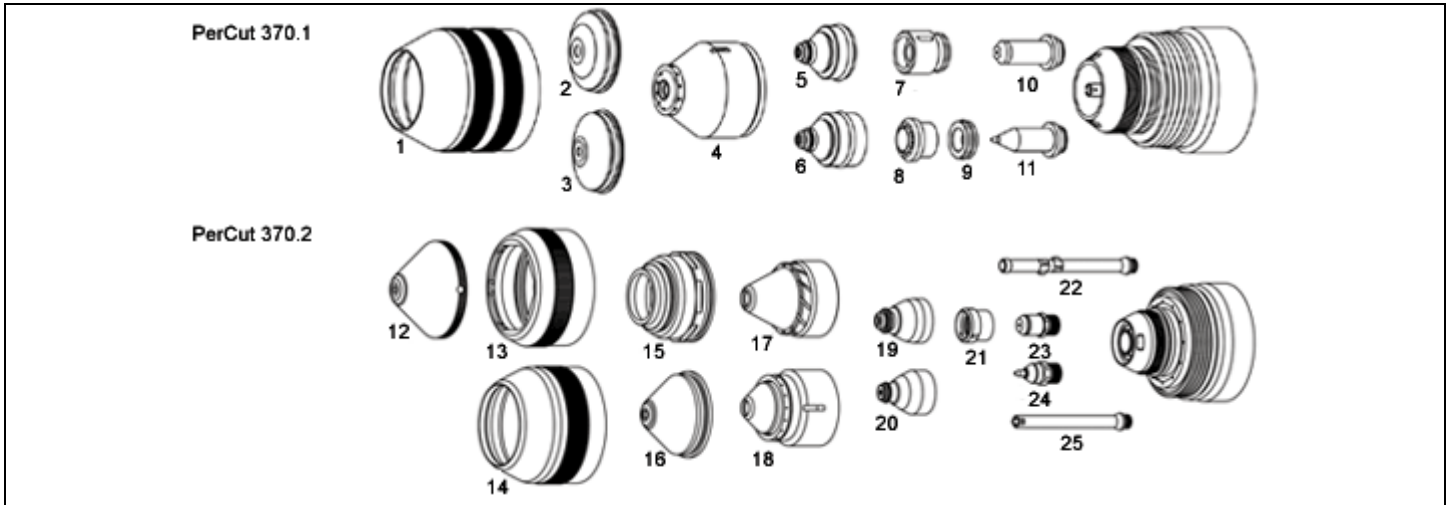


**ProductLine:** PerCut 370.1/370.2  
**System:** HiFocus 280i/360i/440i®

**Date:** Dec-6-2013



Consumables					
#	PartNo	Reference	Description	Pkg Qty	UOM
1	C106-081	.11.835.201.081	Protection Cap, Z501	1	EA
2	C106-561	.11.835.201.1561	Swirl Gas Cap, 1.5mm, Z4015	1	EA
	C106-571	.11.835.201.1571	Swirl Gas Cap, 2.0mm, Z4020	1	EA
	C109-551	.11.835.201.1551	Swirl Gas Cap, 2.2mm, Z4022	1	EA
	C106-581	.11.835.201.1581	Swirl Gas Cap, 2.5mm, Z4025	1	EA
	C106-591	.11.835.201.1591	Swirl Gas Cap, 3.0mm, Z4030	1	EA
3	C106-1581	.11.835.411.1581	Swirl Gas Cap, 3.0mm, Z4530	1	EA
	C109-580	.11.835.411.1580	Swirl Gas Cap, 3.5mm, Z4535	1	EA
2	C106-171	.11.835.401.1571	Swirl Gas Cap, 4.0mm, Z4140	1	EA
	C106-1591	.11.835.411.1591	Swirl Gas Cap, 4.0mm, Z4540	1	EA
	C109-590	.11.835.411.1590	Swirl gas cap, 4.5mm, Z4545	1	EA
4	K109-160	.11.842.401.160	Nozzle Cap, 0.4mm, S3004	1	EA
	C109-162	.11.842.401.162	Nozzle Cap, 0.8mm, S3008	1	EA
	C109-621	.11.842.401.1621	Nozzle Cap, 0.8mm, S3018	1	EA
	C109-622	.11.842.401.1622	Nozzle Cap, 0.8MM, S3028	1	EA
5	C109-406	.11.843.021.406	Nozzle, 0.6mm, 25 Amp, S2006X	10	EA
	C109-407	.11.843.021.407	Nozzle, 0.7mm, 35 Amp, S2007X	10	EA

Consumables					
#	PartNo	Reference	Description	Pkg Qty	UOM
	C109-408	.11.843.021.408	Nozzle, 0.8mm, 50/60 Amp, S2008X	10	EA
	C109-409	.11.843.021.409	Nozzle, 0.9mm, 70/80 Amp, S2009X	10	EA
	C109-410	.11.843.021.410	Nozzle, 1.0mm, 80/90 Amp, S2010X	10	EA
	C109-411	.11.843.021.411	Nozzle, 1.1mm, 90/100 Amp, S2011X	10	EA
	C109-112	.11.843.121.412	Nozzle, 1.2mm, 100 Amp, S2112X	10	EA
	C109-412	.11.843.021.412	Nozzle, 1.2mm, 100/130 Amp, S2012X	10	EA
6	C109-614	.11.843.111.614	Nozzle, 1.4mm, 120 Amp, S2514X	5	EA
	C109-114	.11.843.121.414	Nozzle, 1.4mm, 130 Amp, S2114X	10	EA
	C109-414	.11.843.021.414	Nozzle, 1.4mm, 130/160 Amp, S2014X	10	EA
	C109-616	.11.843.111.616	Nozzle, 1.6mm, 140 Amp, S2516X	5	EA
	C109-416	.11.843.021.416	Nozzle, 1.6mm, 160 Amp, S2016X	10	EA
	C109-116	.11.843.121.416	Nozzle, 1.6mm, 160 Amp, S2116X	10	EA
	C109-618	.11.843.111.618	Nozzle, 1.8mm, 160 Amp, S2518X	5	EA
7	C106-153	.11.835.221.153	Gas Guiding Cap, 0.4mm, O2, Z101	1	EA
	C109-154	.11.835.221.154	Gas Guiding Cap, 0.4mm, Z102	1	EA
8	K106-253	.11.834.321.153	Gas Guide Cap, O2, Z111	1	EA
9	C106-303	.11.835.421.303	Spacer, Z111A	1	EA
10	C109-1010	.11.843.021.310	Electrode, SilverLine®, O2 XL, S002X	1	EA
	C109-1030	.11.843.121.310	Electrode, SilverLine®, O2 XL, S012X	1	EA
11	C109-510	.11.842.411.510	Electrode, S042	1	EA
	C109-1510	.11.842.511.510	Electrode, S052	1	EA
13	C117-081	.11.841.721.081	Protective Cap T502	1	EA
14	C117-1081	.11.846.901.081	Protective Cap, T503	1	EA
15	C117-0271	.11.836.921.271	Swirl Gas Nozzle, T522	1	EA
16	C117-550	.11.833.101.1550	Swirl Gas Cap, 3.0MM, V4330	1	EA
12	C117-155	.11.833.101.155	Swirl Gas Cap, 3.5MM, V4335	1	EA
	C117-156	.11.833.101.156	Swirl Gas Cap, 4.0MM, V4340	1	EA
	C117-157	.11.833.101.157	Swirl Gas Cap, 4.5MM, V4345	1	EA
	C53-158	.11.833.101.158	Swirl Gas Cap, 5.0mm V4350	1	EA
	C117-159	.11.833.101.159	Swirl Gas Cap, 6.0MM, V4360	1	EA
	C117-540	.11.846.901.1540	Swirl Gas Cap, T4040	1	EA
	C117-545	.11.846.901.1545	Swirl Gas Cap, T4045	1	EA
	C117-1550	.11.846.901.1550	Swirl Gas Cap, T4050	1	EA

Consumables					
#	PartNo	Reference	Description	Pkg Qty	UOM
17	C117-160	.11.836.901.160	Nozzle Cap, T3000	1	EA
	C117-163	.11.836.901.163	Nozzle Cap, T3030	1	EA
	C117-164	.11.836.901.164	Nozzle Cap, T3045	1	EA
	C117-165	.11.836.901.165	Nozzle Cap, T3060	1	EA
18	C117-608	.11.846.901.1608	Nozzle Cap, T3208	1	EA
	C117-609	.11.846.901.1609	Nozzle Cap, T3209	1	EA
	C117-619	.11.846.901.1619	Nozzle Cap, T3219	1	EA
	C117-628	.11.846.901.1628	Nozzle Cap, T3228	1	EA
19	C117-015	.11.846.921.415, .11.836.921.420	Nozzle, CoolFlow™, 1.5mm, 120A, T2115Y	1	EA
	C117-020	.11.846.921.420	Nozzle, CoolFlow™, 2.0mm, 200A, T2120Y	1	EA
20	C117-623	.11.836.911.623	Nozzle, CoolFlow™, 2.3mm, 250A, T2523	1	EA
	C117-025	.11.846.921.425	Nozzle, CoolFlow™, 2.5mm, 250A, T2125Y	1	EA
	C117-625	.11.836.911.625	Nozzle, CoolFlow™, 2.5mm, 280A, T2525	1	EA
	C117-027	.11.846.921.427	Nozzle, CoolFlow™, 2.7mm, 300A, T2127Y	1	EA
	C117-627	.11.846.911.627	Nozzle, CoolFlow™, 2.7mm, 360A, T2427	1	EA
	C117-629	.11.846.911.629	Nozzle, CoolFlow™, 2.9mm, 440A, T2429	1	EA
	C117-030	.11.846.921.430	Nozzle, CoolFlow™, 3.0mm, 360A, T2130Y	1	EA
21	C117-153	.11.836.921.153	Gas Guide, T101	1	EA
	C117-154	.11.836.921.154	Gas Guide, T102	1	EA
	C117-542	.11.836.921.1542	Gas Guide, T104	1	EA
23	C117-1000	.11.844.921.300	Electrode, SilverLine®, O2/Air, T012Y	1	EA
24	C117-500	.11.836.911.500	Electrode, ArH2, T051	1	EA

Maintenance					
#	PartNo	Reference	Description	Pkg Qty	UOM
	K109-152	.11.842.401.152	Cooling Tube, S901	1	EA
22	C117-152	.11.844.901.152	Water Tube, T902Y	1	EA
25	C117-230	.11.828.911.230	Water Tube, V951	1	EA