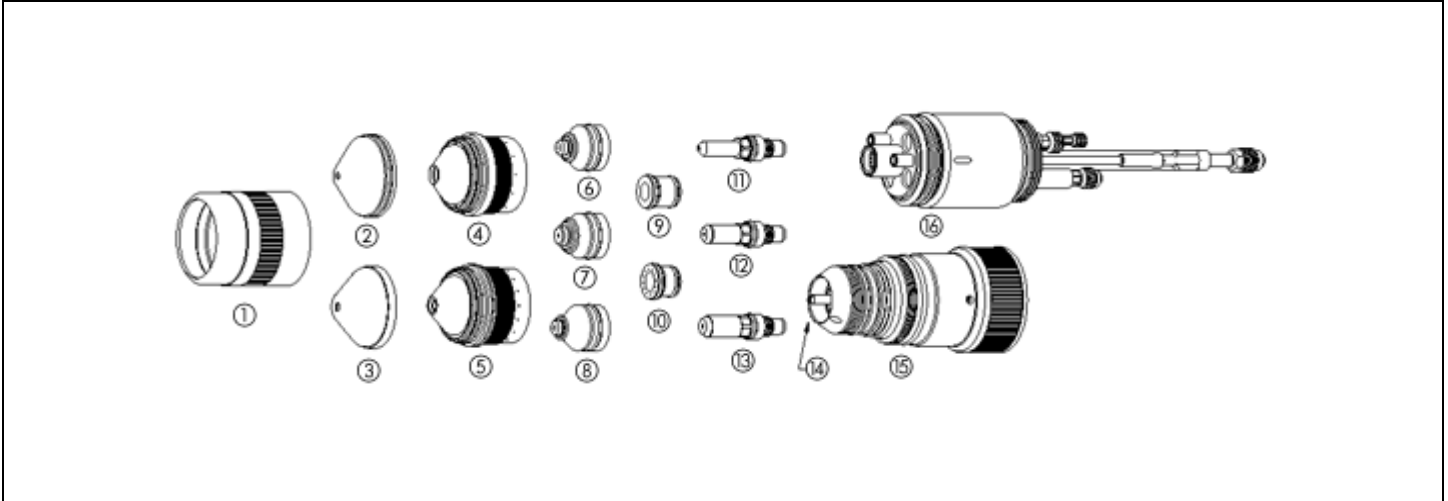


ProductLine: Spirit
System: Spirit® 150a, 200a, 275a, 400a, ProLine®
 2150, 2200, 2260

Date: Dec-11-2015



Consumables					
#	PartNo	Reference	Description	Pkg Qty	UOM
1	C107-154	277154	Outer Cap	1	EA
	C107-050	284150	Retaining Cap, Outer, 400Amp	1	EA
2	C107-145	277145	Shield Cap, 30Amp, MS/AL	1	EA
	C107-144	277144	Shield Cap, 30 Amp, SS, Air	1	EA
	C107-115	277115	Shield Cap, 50 Amp, MS	1	EA
	C107-149	277149	Shield Cap, 50 Amp, SS, Air	1	EA
	C107-150	277150	Shield Cap, 70 Amp, MS/SS/AL	1	EA
	C107-286	277286	Shield cap, 100Amp, MS/SS/AL, Air	1	EA
	I107-146	277146	Shield Ring, 100 AMP, SS, H17	1	EA
	C107-117	277117	Shield Cap, 150 Amp, MS/SS/AL	1	EA
	C107-274	277274	Shield Cap, 200 Amp, MS/SS/AL	1	EA
	C107-263	277263	Shield Cap, 275 Amp, MS/SS/AL	1	EA
3	C107-123	284123	Shield cap, 400Amp, MS	1	EA
4	C107-153	277153	Retaining Cap, 30/50/070 Amp, MS/SS/AL	1	EA
	C107-110	277110	Retaining Cap, Inner, 30/50 A, SS, Air	1	EA
	C107-151	277151	Retaining Cap, 100/150 Amp, MS/SS/AL	1	EA

Consumables					
#	PartNo	Reference	Description	Pkg Qty	UOM
	C107-152	277152	Retaining Cap, 150 Amp, MS/SS/AL	1	EA
	I107-113	277113	Retaining Cap, 70/100 Amp, SS, H17	1	EA
	C107-266	200219, 277266	Retaining Cap, 200/275 Amp, MS/SS/AL	1	EA
5	C107-121	284121	Retaining Cap, Inner, 400 Amp, MS	1	EA
6	C107-120	277120	Nozzle, CoolFlow™, 30 Amp, MS/AL	1	EA
	C107-021	277121	Nozzle, CoolFlow™, 30 Amp, SS, Air	1	EA
	C107-122	277122	Nozzle, CoolFlow™, 50 Amp, MS/AL	1	EA
	C107-023	277123	Nozzle, CoolFlow™, 50 Amp, SS, Air	1	EA
	C107-125	277125	Nozzle, CoolFlow™, 70 Amp, MS/SS/AL	1	EA
	I107-124	277124	Nozzle, 70 AMP, SS, H17	1	EA
	C107-284	277284	Nozzle, CoolFlow™, 100 A, MS/SS/AL, Air	1	EA
	I107-126	277126	Nozzle, 100 AMP, SS, H17	1	EA
7	C107-293	277293	Nozzle, CoolFlow™, 150 A, MS/SS/AL Air	1	EA
	I107-297	277297	Nozzle, 150 AMP, SS, H17	1	EA
	C107-289	277289	Nozzle, CoolFlow™, 200 A, MS/SS/AL Air	1	EA
	C107-269	277269	Nozzle, CoolFlow™, 275 Amp, MS	1	EA
	C107-276	277276	Nozzle, CoolFlow™, 275 Amp, SS/AL, Air	1	EA
8	C107-025	284125	Nozzle, CoolFlow™, 400 Amp, MS	1	EA
	C107-138	277138	Swirl Ring, 30 Amp, SS, Air	1	EA
	C107-142	277142	Swirl Ring, 50/70/100 Amp	1	EA
	C107-283	277283	Swirl Ring, 100 Amp, MS/SS/AL, Air	1	EA
	I107-141	277141	Swirl Ring, 100 AMP, SS H17	1	EA
10	C107-139	277139	Swirl Ring, 150 Amp, MS/SS/AL	1	EA
	C107-143	277143	Swirl Ring, 200 Amp, MS/SS/AL	1	EA
	C107-259	277259	Swirl Ring, 200 Amp, SS, H17	1	EA
	C107-258	277258	Swirl Ring, 275 Amp, MS/SS/AL	1	EA
	C107-022	284122	Swirl Ring, 400 Amp, MS/SS/AL	1	EA
	C107-137	277137	Electrode, 30/50 Amp, SS, Air	1	EA
	C107-131	277131	Electrode, Copperline, 50/70 Amp, MS/SS/AL	1	EA
	I107-132	277132	Electrode Copper, 70 AMP, SS, H17	1	EA
12	C107-1082	277282	Electrode, Silverline®, 100 A, MS/SS/AL	1	EA
	I107-133	277133	Electrode, 100 AMP, SS, H17	1	EA

Consumables					
#	PartNo	Reference	Description	Pkg Qty	UOM
	C107-1092	277292	Electrode, Silverline®, 150 A, MS/SS/AL	1	EA
	I107-135	277135	Electrode, 150 AMP, SS, H17	1	EA
	C107-1091	277291	Electrode, Silverline®, 200 A, MS/SS/AL	1	EA
	C107-1070	277270	Electrode, Silverline®, 275 Amp, MS/SS/AL	1	EA
13	C107-1024	284124	Electrode, Silverline®, 400 Amp, MS	1	EA

Maintenance					
#	PartNo	Reference	Description	Pkg Qty	UOM
	C23-001	N/A	Swirl ring removal tool	1	EA
14	C107-007	277007	Cooling Tube	1	EA
	C107-091	N/A	O-ring Kit, Torch Head	1	EA
	C107-126	N/A	O-ring Kit, Rear Torch Plugs	1	EA
16	C107-9050	279050	Torch Base, ProLine/Spirit 150a-275a	1	EA
15	C107-9150	279150	Torch Head, ProLine/Spirit 150a-275a	1	EA
	C107-1050	N/A	Torch Kit, Proline/Spirit 150a-275a	1	EA
	C107-9100	279100	Torch Head, Spirit 400a	1	EA
	C107-1000	N/A	Torch Kit, Spirit 400a	1	EA
	C107-9000	279000	Torch Base, Spirit 400a	1	EA
	C107-300	N/A	Plasma Gas Tube	1	EA
	I107-7000	277000	Torch Body	1	EA
	I107-056	277056	Nozzle Removal Tool	1	EA
	I107-7087	277087	Kaliburn Electrode Tool	1	EA
	028872	N/A	Torch Coolant	2	EA
	027055	632-596, 8-4025	O-Ring Lube	1	EA