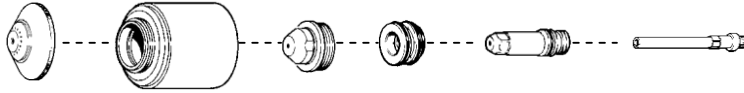


Hypertherm®

HySpeed® HT2000®

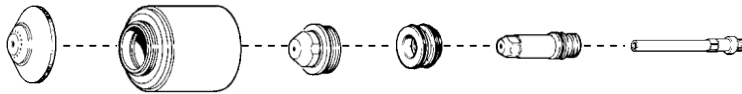
Consumables

Mild steel

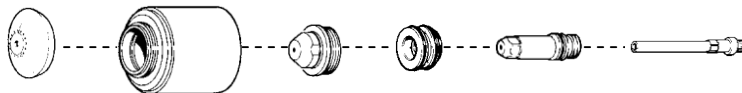


	Plasma gas	Shield	Retaining cap	Nozzle	Swirl ring	Electrode	SilverPlus electrode	Water tube
50 A	O ₂	120186	120185	120182	120179	120178	————	020963
100 A	O ₂	020424	120837	020690	020613	120547	————	020963
100 A	Air	020448	120837	020611	020607	120547	————	020963
200 A	N ₂	020424	120837	020608	020607	020415	————	020963
200 A	Air	020424	120837	020608	020679	120667	————	020963
200 A	O ₂	020424	120837	020605	120833	120667	220084	020963
200 A HySpeed	O ₂	220239	220242	220237	220236	220235	————	020963
200 A Bevel	O ₂	120260	120837	120259	120833	120258	————	120257
200 A Gouging	Air	020485	120837	020615	020607	120667	————	020963

Stainless steel/Aluminum



	Plasma gas	Shield	Retaining cap	Nozzle	Swirl ring	Electrode	Water tube
40 A	Air	020688	020423	020689	020613	120667	020963
100 A	H35	020448	120837	020611	020607	020415	020963
100 A	Air	020488	120837	020611	020607	120547	020963
200 A	H35	020602	120837	020608	020607	020415	020963
200 A	N ₂	020424	120837	020608	020607	020415	020963
200 A	Air	020424	120837	020608	020679	120667	020963
200 A Gouging	H35	020485	120837	020615	020607	020415	020963



	Plasma gas	Shield	Retaining cap	Nozzle	Swirl ring	Electrode	Water tube
100 A	O ₂	020566	020423	020690	020613	120547	020963
100 A	Air	020618	020423	020611	020607	120547	020963
200 A	O ₂	020566	020423	020605	120833	120667	020963
200 A	Air	020566	020423	020608	020679	120667	020963
200 A	N ₂	020566	020423	020608	020607	020415	020963
200 A HySpeed	O ₂	220295	220238	220237	220236	220235	020963



Section 2: Current systems

TECHNOLOGIES

- Chambered swirl ring™**
- Coaxial-assist™ jet**
- Dimpled electrode**
- HyDefinition®**
- HyLife®**
- Hyspeed®**
- LongLife™**
- SilverPlus®**



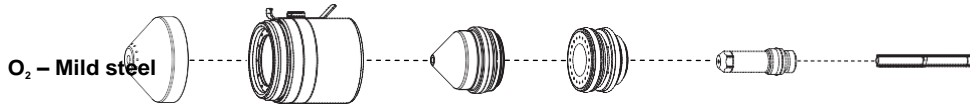
Kungsgatan 37, 702 24 Örebro
www.konstruktiv.se

Tel: 019 - 12 5800
info@konstruktiv.se

HyPro2000™ upgrade torch

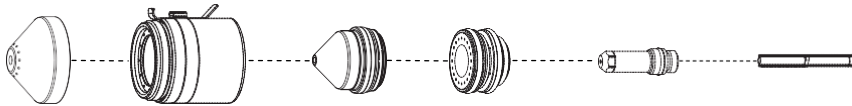
For HT2000

Consumables



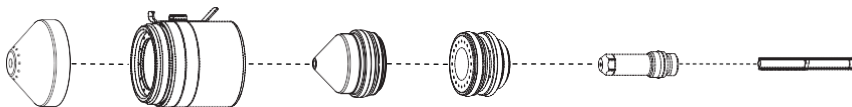
	Shield	Shield cap	Nozzle	Swirl ring	Electrode	SilverPlus electrode	Water tube
50 A	220532	220936 220935 without tab	220891	220529	220528	_____	220521
130 A	220491	220936 220935 without tab	220893	220488	220487	420185	220521
200 A	220832	220936 220935 without tab	220831	220834	220937	220925	220521

Air – Mild steel/Stainless steel/Aluminum



	Shield	Shield cap	Nozzle	Swirl ring	Electrode	Water tube
50 A	220532	220936 220935 without tab	220890	220529	220528	220521
130 A	220536	220936 220935 without tab	220892	220488	220487	220521
200 A	420045	220936 220935 without tab	420044	220488	220937	220521

N₂ – Stainless steel/Aluminum



	Shield	Shield cap	Nozzle	Swirl ring	Electrode	Water tube
200 A	420045	220936 220935 without tab	420044	220529	020415	220521

Bold indicates new part numbers



HyPro2000 straight torch



HyPro2000 quick-disconnect torch

TECHNOLOGIES

- Chambered swirl ring™
- Conical Flow™
- CoolFlow™
- LongLife®
- SilverPlus®
- TrueFlow™
- Vented shield
- HyLife®



Kungsgatan 37, 702 24 Örebro
www.konstruktiv.se

Tel: 019 - 12 5800
info@konstruktiv.se

